



Inclusive learning at our Peterlee & Houghall Campuses

    edc.ac.uk



Creating Outstanding Futures For Everyone

Foundation Learning

Our Entry Level Study Programmes (Foundation Learning) provide a vocational programme with specific foundation learning pathways, designed to meet the needs of students who may have a range of learning difficulties and/or disabilities.

The pathways offer a wide range of subjects, tailored to the correct level to meet the needs of each individual learner and their vocational areas of interest.

Study programmes within Foundation Studies offer a holistic approach to learning and personal development; centred on the progression of the individual within specific vocational areas, along with maths, English, travel training, work experience and broader independent living skills.

Our curriculum offers at our Houghall and Peterlee sites vary slightly, making use of the fantastic and unique facilities at each. We also tailor our curriculum offer at each site to align with the mainstream progression options available at them.

So, if you're looking to be a barber, plumber, dancer or travel assistant; our Foundation Learning provision at Peterlee will prepare you with the life and social skills you need to flourish in these environments.

In contrast, if you're looking to be a farmer, florist, veterinary nurse or dog groomer our provision at Houghall will prepare you for those exciting job roles.

We recently launched our Supported Internship programme, which looks to give young people with additional support needs a pathway to progress on to supported employment longer term. The Internship will run across both the Houghall and Peterlee sites and will look to utilise the specialist vocational and employability opportunities unique to each site.

All of our provision works alongside the national Preparing for Adulthood outcomes, a series of topics and areas of focus equipping young people for their transition to adulthood and onward journey beyond college. You can read more about the PfA outcomes at www.preparingforadulthood.org.uk

Case Study: Broughan's Progression Journey

Broughan joined the Foundation Studies department in 2018/19 to work on social, emotional wellbeing, self-esteem and core skills in maths and English.

She then enrolled on to a Level 1 programme to develop a broad set of land-based skills at our Houghall campus and worked on PfA (Preparing for Adulthood) outcomes.

Broughan progressed on to our mainstream Level 2 Floristry programme in 2019/20, continuing to make progress and develop core skills in maths and English.

She successfully achieved her Level 2 qualification in 2020, gaining vital employability skills and work experience.

Currently, Broughan is studying on a Level 3 Advanced Technical Diploma in Floristry and preparing to enter this exciting industry as a professional florist.

Qualifications available at the Peterlee Campus

Entry Level 2 Certificate
in Independent Living Skills

Entry Level 3 in Skills for Working Life

Level 1 Employability Certificate

Level 1 Occupational Studies Pathway

Supported Internship

• A supported internship is a programme aimed at young people, aged between 16 to 24, who have an Education, Health and Care Plan (EHCP) and would like to move into employment but may need extra support to do so.

• The programme includes maths and/or English (if needed), career development skills and a work placement with an employer.

Qualifications available at the Houghall Campus

Entry Level 2 in Skills for Working Life Certificate

Entry Level 3 in Skills for
Working Life (including Animal Care Pathway)

Level 1 Employability Certificate

Level 1 Occupational Studies Pathway

Supported Internship

• As detailed above



Creating Outstanding Futures

f t i s edc.ac.uk

Our Houghall campus foundation learning offer and progression routes



Entry Level 2
Skills for Working Life Certificate

YOU'LL LEARN:

- Workplace safety and emergency procedures
- Identify hazards in familiar settings
- Effective communication
- Healthy living
- Working as part of a group
- Recognise farm animals and their housing
- Recognise the body parts of small animals and their function
- Assist with the cleaning of small animal housing
- Recognise trees and plants
- Plant an area to attract wildlife
- Recognise, use and care for tools used in horticulture
- Wrap flowers and plants
- Prepare a container for a flower arrangement

Entry Level 3
Skills for Working Life Certificate

YOU'LL LEARN:

- Work safely
- Plan and make a journey using public transport
- Healthy living
- Working as part of a team
- Recognise a healthy farm animal
- Clean farm animal housing
- Recognise types and parts of the bodies of small animals
- Recognise trees and plants and their importance to wildlife
- Insert plant material
- Control weeds in a planted area
- Condition floristry plant material
- Recognise materials used in floristry

Level 1 Employability Certificate

YOU'LL LEARN:

- Maintain the safety of self and others in the workplace
- Principles of transporting supplies of physical resources within the work area
- Assist with the transport supplies of physical resources in the work area
- Assist with maintaining structures and surfaces
- Principles of maintaining structures and surfaces
- Assist with the care of animals Principles of the care of animals
- Assist with the movement of animals
- Principles of the movement of animals
- Principles of dealing with animal accommodation
- Assist with animal accommodation

Level 1 Occupational Studies Pathway

YOU'LL LEARN:

L1 Employability

- Planning for progression
- Managing personal finance
- Interview skills
- Safe learning in the workplace
- Using materials and equipment for a practical activity
- Understanding conflict at work

L1 Occupational Studies

- Customer service in the hospitality industry
- Introduction to the catering and hospitality industry
- Understanding customer service in the retail sector
- Understanding the retail selling process
- Undertaking an enterprise project

**YOUR
GOAL**

Mainstream

Level 1 Supported Internship

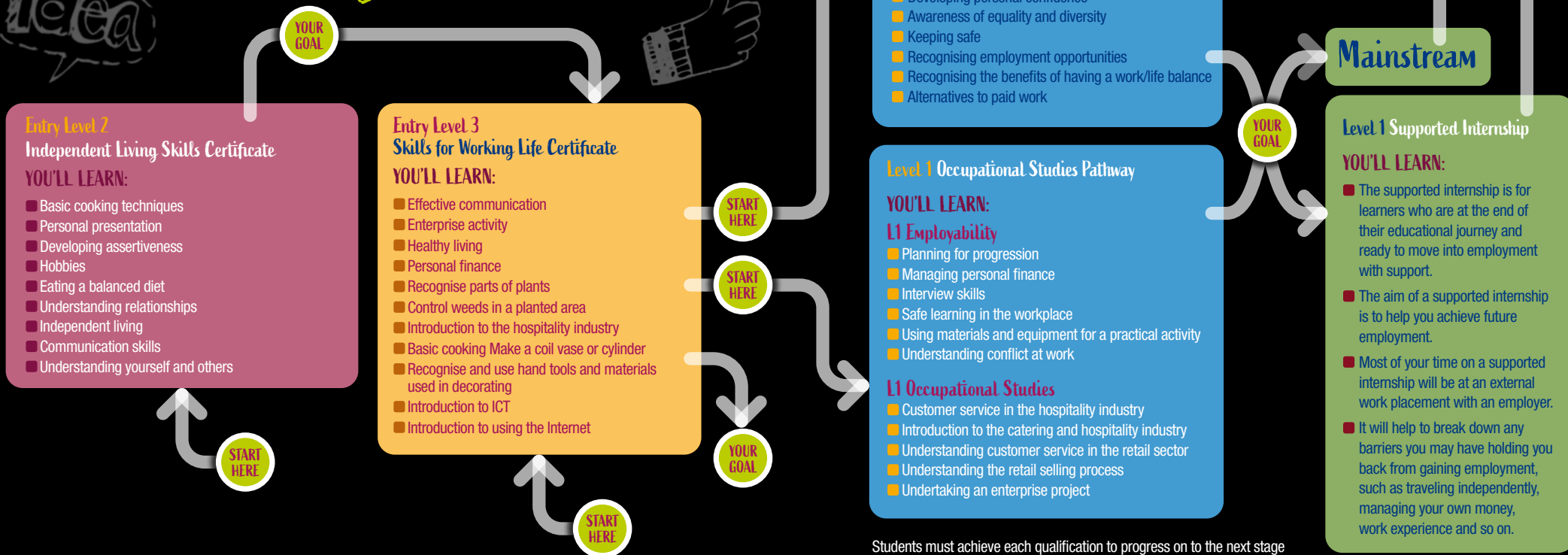
YOU'LL LEARN:

- The supported internship is for learners who are at the end of their educational journey and ready to move into employment with support.
- The aim of a supported internship is to help you achieve future employment.
- Most of your time on a supported internship will be at an external work placement with an employer.
- It will help to break down any barriers you may have holding you back from gaining employment, such as traveling independently, managing your own money, work experience and so on.

Students must achieve each qualification to progress on to the next stage and you will be required to meet the specific course entry requirements to progress on to mainstream at Level 1, Level 2 or Level 3.



Our Peterlee campus foundation learning offer and progression routes



Students must achieve each qualification to progress on to the next stage and you will be required to meet the specific course entry requirements to progress on to mainstream at Level 1, Level 2 or Level 3.



Our Autism Provision

Introduction

Our Derwent Autism Provision was established in July 2011 at our Houghall Campus, in Durham, to support young people with autism who are not ready to access mainstream education.

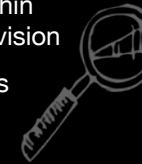
We have close links with supporting agencies working with the young people and their families to offer a holistic approach.

We offer individualised, holistic destination-led programmes that support learners to achieve their personal, social and academic targets.

We support the learners to access all of the curriculum areas within East Durham College across our three sites: the Houghall Campus in Durham, the Peterlee Campus and The Technical Academy which is also based in Peterlee.

Our individual accredited and non-accredited programmes fall into one of the following categories:

- Full time programme within the Derwent Autism Provision
- Mainstream programmes with Autism support
- Supported internships



The ethos of our provision is to build personalised programmes based on each individual learner's need, with the aim of supporting them to develop vital skills needed to progress. We are committed to facilitating the learners' achievement of their full potential.

We believe that communication is key to ensuring that learners experience consistency on their programme, so we work closely with external professionals linked to the young person, as well as with parents and carers. This includes during their transition into and out of the provision.

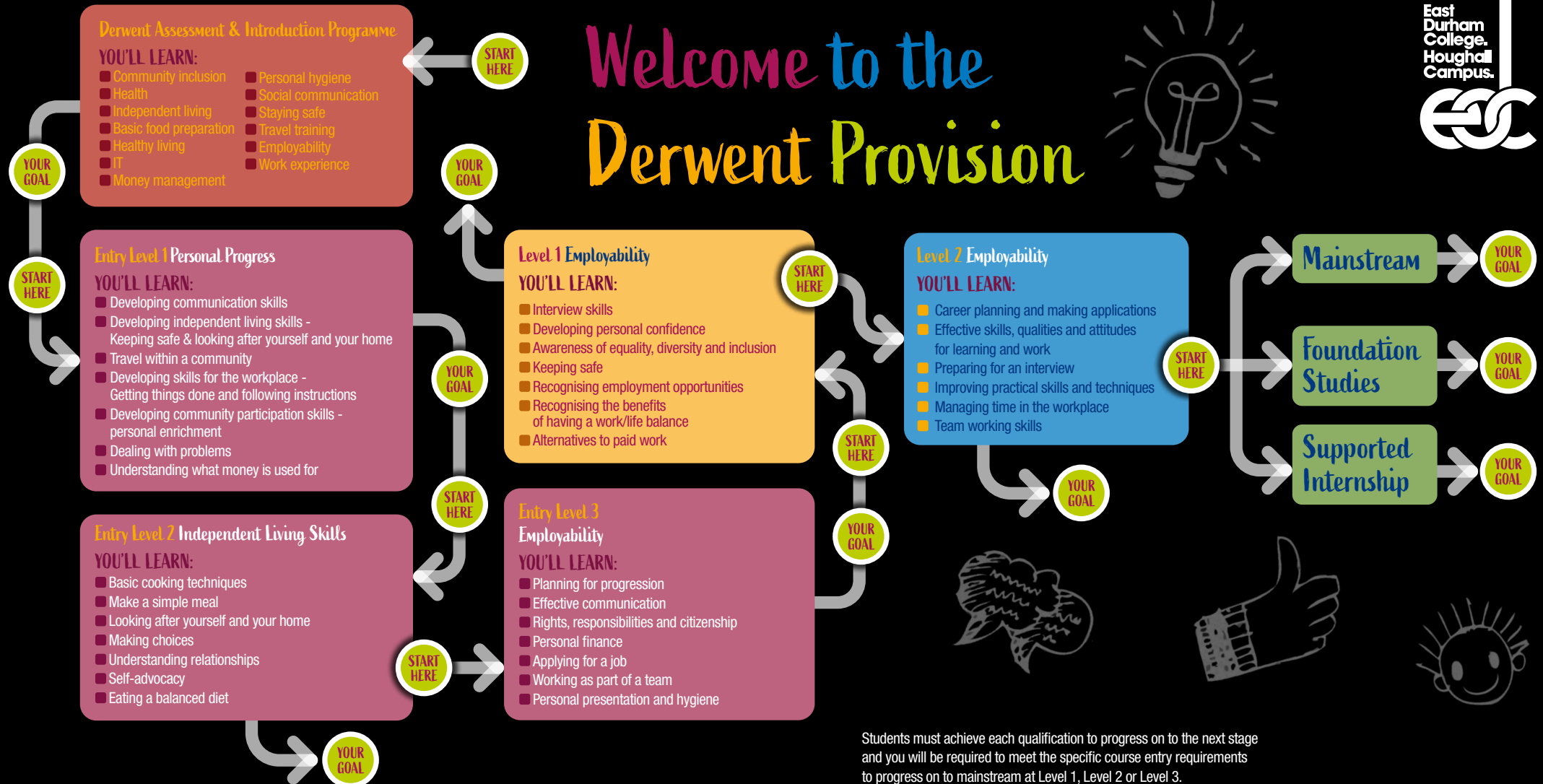
We provide a curriculum that supports the 'Preparing For Adulthood' agenda which involves preparing individuals for paid/voluntary employment and promoting community inclusion by accessing leisure facilities, all of which support individuals to live a healthy and fulfilling lifestyle. This allows learners to explore their personal and social development through travel training, budgeting, cookery and employment skills where there is a strong emphasis on enabling learners to become as independent as possible.

We offer individual maths and English support to help the learner engage and progress. We also offer various vocational tasters to meet their interests and discover possible future employment opportunities.



Where Careers Grow

Welcome to the Derwent Provision





For more details, please contact:

Michelle Forrest

Curriculum Manager for Inclusive Learning

t. 0191 375 4768

e. michelle.forrest@eastdurham.ac.uk

Laura Walker

Programme Area Leader for Inclusive Learning

t. 0191 375 4744 / 0191 823 7625

e. laura.walker@eastdurham.ac.uk

Peterlee Campus «

Willerby Grove, Peterlee, Co. Durham, SR8 2RN

STUDENT SERVICES

0191 518 8222

Houghall Campus «

Houghall, Durham, Co. Durham, DH1 3SG

STUDENT SERVICES

0191 375 4710

enquiries@eastdurham.ac.uk

edc.ac.uk



Creating Outstanding Futures For Everyone